

pebbles 
GREENFIELD'S
2 & 3 BHK HOMES | NEW WAKAD

NEW HEIGHTS OF
Luxury & Serenity



3 SIDE OPEN SMART 3 BHK HOMES

ABOUT ABHINAV GROUP

At Abhinav Group, we believe in innovative lifestyle solutions and delivering the best. We are a known name in the field of infrastructure development since 27 years, and have been doing both commercial and residential projects like Pebbles I, Pebbles II, Pebbles Urbania, Pebbles Athashri and Aeromall since our inception. It is a dream of every family to own a home, we help them render their dream.

With our past projects, we have created an extended family where all the residents are the members. They have enjoyed a life-changing experience after buying a home with us. This has helped us create a memorable and active community living for everyone who have associated with us.



Pebbles Urbania



Park Grandeur



Pebbles II



Aero Mall

& Many More..

ABOUT PEBBLES GREENFIELD'S

A Place Which Helps You Indulge In Green Living,
Adapt A Green Lifestyle and Keeps You Close to a Green Landscape.

MAKE A SMART MOVE

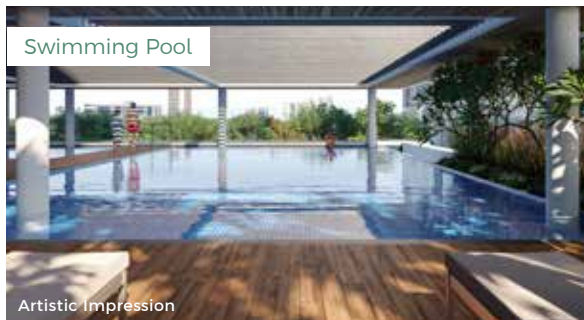
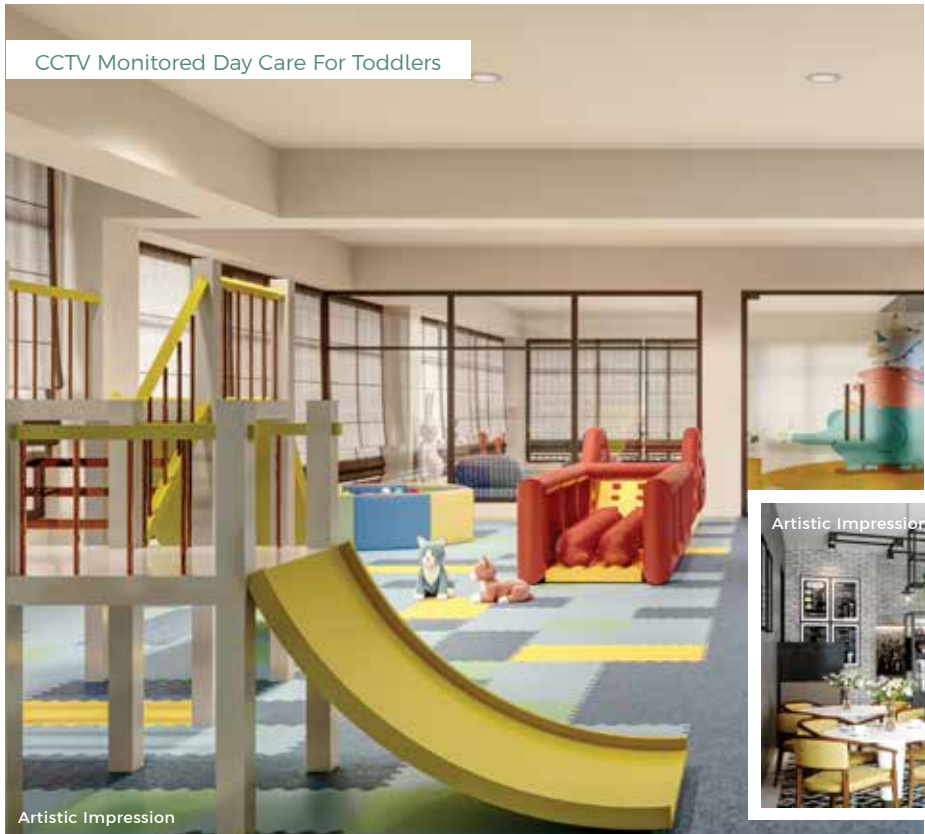
Make a Smart Move and choose the expansive embrace of your own dream home. At Pebbles Greenfield's, your aspirations of owning a dream home seamlessly turn to reality. Indulge in the luxury of 40+ modern amenities and enjoy unparalleled convenience with our prime location near city hotspots. Dive into an enlightened lifestyle, at Pebbles Greenfield's.



Artistic Impression

MODERN AMENITIES

- Club House |
- Multipurpose Hall |
- Party Lawn |
- Children's Play Area |

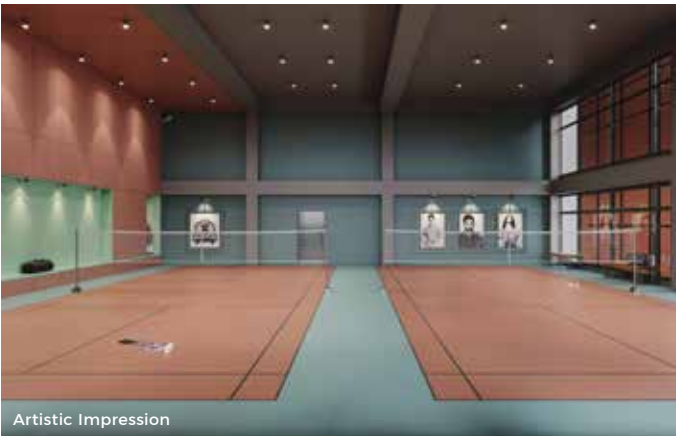


- Senior Citizen's Enclave |
- Outdoor Seating Spaces |
- State-Of-The-Art Gymnasium |

- Indoor Games |
- Amazing Party Lawn |
- Rainwater Harvesting |
- Box Cricket & Pickle Ball Court |
- Swimming Pool With Baby Pool |
- Collaborative Co-working Space |
- Business Bay |
- Conference Room |
- Garbage Chute |
- Outdoor Exercise Area |
- Herbal Garden |
- 100% DG Back-Up For Lifts |

UNIQUE AMENITIES

- | Dance & Music Room
- | Salon & Spa
- | Organic Waste Converter
- | School Bus/Cab Pick Up Point
- | Wheelchair For Every Building
- | Essential Convenience Store
- | Acupressure Pathway
- | EV Charging Infrastructure
- | High Speed Elevators With Automatic Rescue Device System
- | CCTV Monitored Day Care For Kids
- | Badminton Court - 2 Courts





3 SIDE OPEN SMART 3 BHK HOMES

Welcome to a new era of living within Pebbles, where 3 BHK Smart Homes redefine modern comfort and convenience. Seamlessly blending modernity with sophisticated design, our homes offer an exceptional lifestyle that caters to your every need.

Our luxurious 3 BHK homes are designed to offer you the perfect blend of comfort and space. Each spacious unit is thoughtfully crafted to provide ample space for your family's needs, featuring unique designs and contemporary amenities.

With a 3 BHK home at Pebbles, you'll experience a life of sophistication and convenience, surrounded by lush greenery, landscape and top-notch facilities.

Welcome home to a lifestyle that truly defines excellence.



OPTIMUM LIVING

Structure

- RCC Structure With Aluminium Formwork & Ply Form Technology

Flooring

- 800x800mm Double Charged Vitrified Tiles Flooring In All Rooms
- 600x600mm Rustic Tiles In Terraces & Balconies
- 300x300mm Matte Finished Tiles In All Toilets

Windows

- High Density Powder Coated Aluminium Sliding Window With Mosquito Net
- Clear 4mm Glass (Asahi/Modi Or Equivalent Brand)
- Granite Sill For Windows, M.S. Railing For Terraces, No Grills

Bathrooms and Toilets

- American Standard/Toto/Rak/Hindware/Cera Or Equivalent Sanitary Wares
- Grohe/Jaquar/Cera Or Equivalent CP Fittings
- Provision For Exhaust Fan In Toilets
- Hot & Cold Mixer Unit In Bathrooms

Electrification

- Concealed Copper Wiring (Anchor/Polycab/Finolex/RR Or Equivalent)
- Legrand/Schindler/L&T/GM Or Equivalent Modular Switches
- TV & Telephone Points In Living Room & Master Bedroom
- Provision For Washing Machine, Refrigerator, Water Purifier
- Provision For Air-conditioner In All Rooms



Artistic Impression



OPTIMUM LIVING

Wall and Paint

- | 8" Thick External Wall & 6" Thick Internal Wall
- | Weather Shield Paint For External Wall

Doors and Frames

- | Laminated Finished Toilet Doors With Granite Door Frame
- | 3 Track Aluminium Sliding Doors For Balcony
- | Decorative Main Door With Digital Lock
- | Laminated Finished Internal Doors

Kitchen

- | Granite Countertop On The Platform With Stainless Steel Sink
- | Provision For Water Purifier
- | Designer Dado Tiles
- | Gas Leak Detector

Convenient Amenities

- | Fire Alarm & Smoke Leak Detector With Sprinkler System
- | High Speed Elevators With Auto Rescue Device (Otis/Kone/Fugitec/Schindler Or Equivalent)
- | Elegant Compound Wall Drop Off Space To Building
- | Well-equipped Fire-fighting System As Per PCMC Norms
- | Ample Car Parking & Space For Visitor Parking
- | Ample Water Storage For Fire-fighting
- | Energy Efficient LED Common Lighting

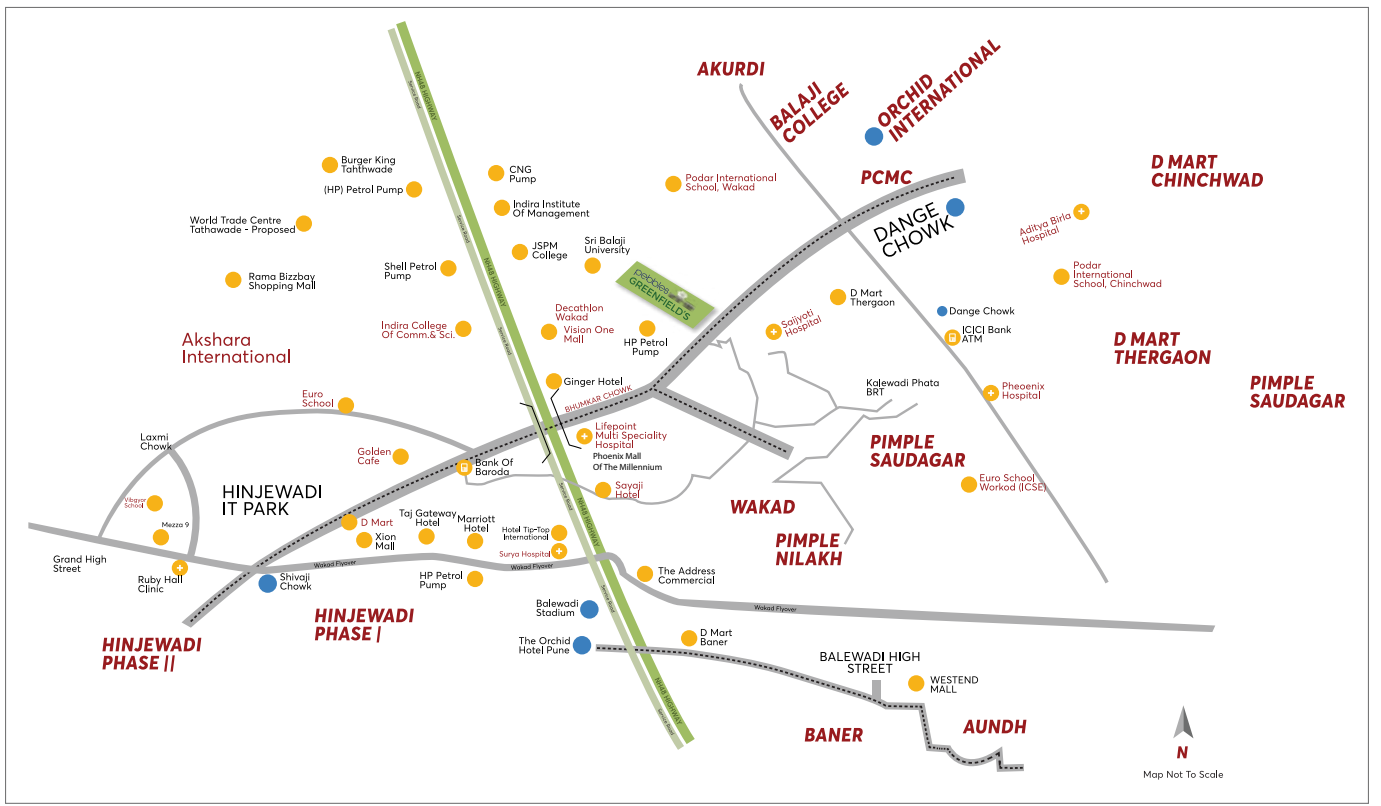
Solar Water

- | Solar Power System

Power Back-up

- | Provision For Inverter Power Back-up For Individual Flat
- | D.G. Back-up For Common Area Light Points

LOCATION MAP



PRIME HOTSPOTS



MALLS and SHOPPING COMPLEX

- Phoenix Mall Of The Millennium - **1.7 Kms**
- Vision One Mall - **2.2 Kms**
- Decathlon, Wakad - **2.2 Kms**
- Elpro City Square - **4.0 Kms**
- Xion Mall - **4.1 Kms**
- Grand High Street - **6.1 Kms**
- City One Mall - **6.2 Kms**



HOTELS and RESTAURANTS

- McDonald's - **1.8 Kms**
- Barbeque Nation - **2.0 Kms**
- Sayaji Hotel - **2.0 Kms**
- Lemon Leaf Restaurant - **2.6 Kms**
- Hotel Tip Top International - **2.7 Km**
- Burger King - **3.2 Kms**
- Yaara Di Haveli - **3.5 Kms**
- Barbeque Ville - **3.9 Kms**
- Vivanta Pune, Hinjewadi - **4.2 Kms**
- Lemon Tree Hotel, Hinjewadi - **4.4 Kms**



HOSPITALS

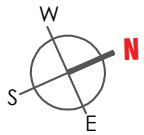
- Saijyoti Hospital & ICU - **450 Meters**
- Golden Care Hospital - **2.1 Kms**
- Life Point Multi-Speciality Hospital - **2.2 Kms**
- Aditya Birla Memorial Hospital - **2.3 Kms**
- Phoenix Hospital - **2.8 Kms**
- Ruby Hall Clinic - **5.4 Kms**
- Surya Mother & Child Super Speciality Hospital - **8.6 Kms**



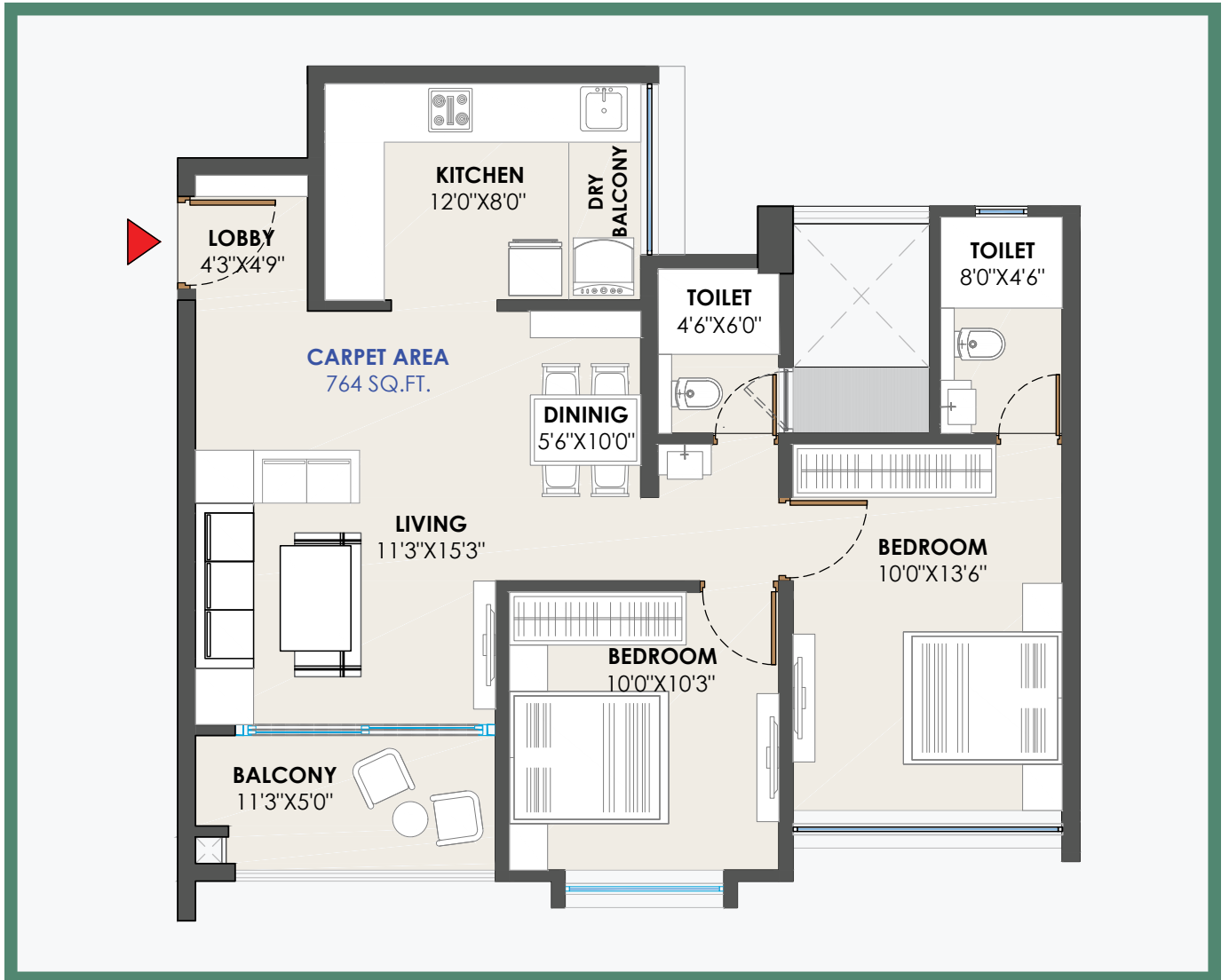
EDUCATIONAL INSTITUTES

- Balaji Institute of Mordern Management - **1.4 Kms**
- Indira College Of Management - **2.2 Kms**
- Blossom Public School - **2.7 kms**
- Akshara International School & Junior College - **2.8 Kms**
- Podar International School, Wakad - **3.0 Kms**
- Orchids - The International School - **3.3 Kms**
- Euro School Wakad - ICSE School - **3.3 Kms**
- Vidya Valley World School - **3.8 Kms**

TYPICAL FLOOR - BUILDING B

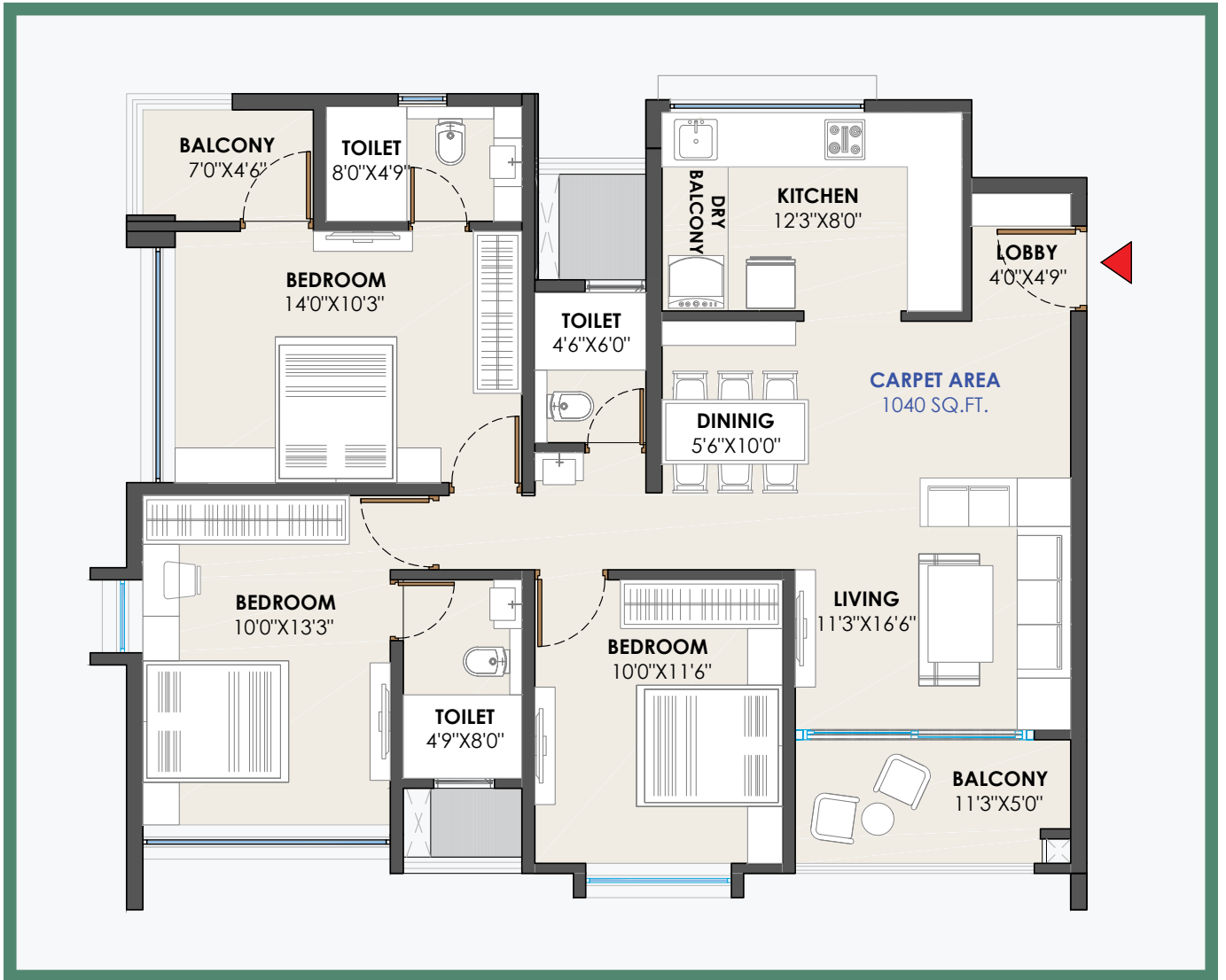


2 BHK



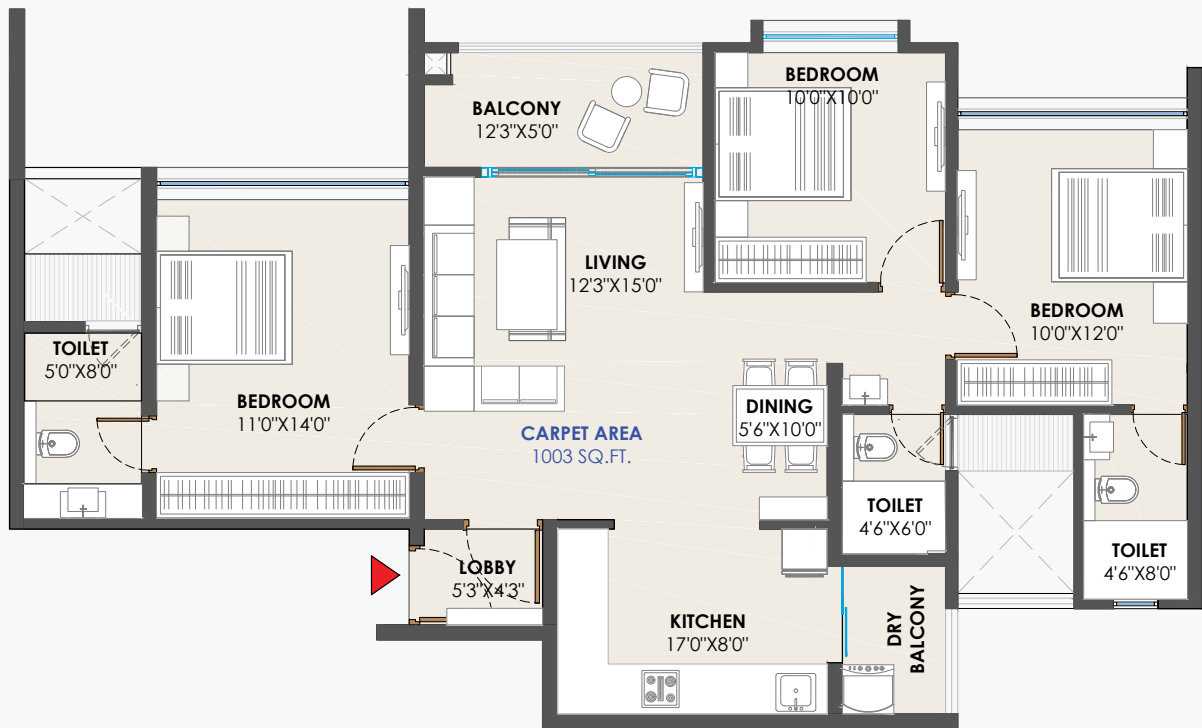
CARPET AREA (SQ.FT.)	BALCONY AREA (SQ.FT.)	TOTAL CARPET AREA(SQ.FT.)
689	75	764 SQ.FT.

3 BHK



CARPET AREA (SQ.FT.)	BALCONY AREA (SQ.FT.)	TOTAL CARPET AREA(SQ.FT.)
933	107	1040 SQ.FT.

3 BHK-B



CARPET AREA (SQ.FT.)	BALCONY AREA (SQ.FT.)	TOTAL CARPET AREA(SQ.FT.)
914	89	1003 SQ.FT.



Phone - 020 25663051

Email - sales@abhinavinfra.com | Website - www.abhinavgroup.co.in

Credits:

Architect - Studio Arcon Architects

RCC Consultants - Strudcom Consultants Pvt. Ltd.

M.E.P. Consultant - Unicorn M.E.P. Consultants Pvt. Ltd.

Landscape Consultant - Designterra Landscape Consultants

Corporate Address:

CTS 927, Office No. 302, Sanas Memories,
F.C. Road, Pune - 411 005

Site Address:

S. No 46/4, 49/2, Taluka Mulshi,
Near Bhumkar Chowk, Pune - 411 033



Rera Reg. No. : P52100045923



PRECERTIFIED GOLD

Disclaimer: The materials contained in this brochure should not be considered an offer and are solely of an informational nature. The references, images, advertising or declarations made herein are informational only, and not to be interpreted in any other manner. The developer and/or its aliases and/or its subsidiaries reserves the right to make any modifications to the amenities. Stock image - Image for representation purpose only.